



45 McLaren Street North Sydney

LANDSCAPE DOCUMENTATION

DEVELOPMENT APPLICATION

DRAWING REGISTER

Dwg No.	Drawing Title	Scale	Size
General			
LA-DA-00	Cover Page & Drawing Schedule	N/A	A1
LA-DA-01	Legends and Schedules	N/A	A1
LA-DA-02	Tree Protection & Removal Plan	1:200	A1
Plans			
LA-DA-03	Landscape Plan 1 - Lower Level 00	1:200	A1
LA-DA-04	Landscape Plan 2 - Level 00	1:200	A1
LA-DA-05	Landscape Plan 3 - Upper Level 00	1:200	A1
LA-DA-06	Landscape Plan 3 - Level 01	1:200	A1
LA-DA-07	Landscape Plan 3 - Level 02	1:200	A1
LA-DA-08	Landscape Plan 3 - Level 03	1:200	A1
LA-DA-09	Landscape Plan 3 - Level 04	1:200	A1
LA-DA-10	Landscape Plan 3 - Level 05+06	1:200	A1
LA-DA-11	Landscape Plan 3 - Level 07	1:200	A1
LA-DA-12	Landscape Plan 3 - Level 08	1:200	A1
LA-DA-13	Landscape Plan 3 - Level 09	1:200	A1
LA-DA-14	Landscape Plan 3 - Level 10	1:200	A1
LA-DA-15	Landscape Plan 3 - Level 11	1:200	A1
LA-DA-16	Landscape Plan 3 - Level 12	1:200	A1
Elevations			
LA-DA-17	Walker Street Elevation	1:200	A1
LA-DA-18	McLaren Street Elevation	1:200	A1
LA-DA-19	Harnett Street Elevation	1:200	A1
LA-DA-20	Through Site Link Elevation	1:200	A1
Palettes			
LA-DA-22	Planting Palette	N/A	A1

GENERAL NOTES

* FOR DEVELOPMENT APPLICATION ONLY

* All tree dimensions and RLs in metres. All other dimensions in mm unless stated otherwise.

* Do not scale from drawings. Use figured dimensions only. Larger scale drawings and written dimensions take preference.

* All work shall be carried out in accordance with current versions of Australian Standards, BCA and Local Government Regulations.

* Structural Details are indicative only and are subject to Structural Engineer's Details and Specifications.

* Drainage details are subject to Hydraulic / Civil Engineer's Detail and Specification.

* Subbase details including compaction are to Civil and Structural Engineer's Specification.

* Lighting Plans are subject to detailed design by a qualified Lighting Consultant or Electrical Contractor.

* Water Feature Details are indicative only and are subject to detailed design by a specialist Water Feature designer.

* Service location on plans are indicative only. *360 Degrees Landscape Architects Pty Ltd* accepts no responsibility for the accuracy of service locations shown or for services not shown. It is the responsibility of the contractor to determine service locations prior to the commencement of work, including contacting *Dial Before You Dig* and performing on site service locations. Locate and protect all services on site and in adjacent public domain. Any damages to services and associated damages remains the responsibility of the contractor and shall be rectified at no cost to the client or any other party.

*All adjoining property elements including but not limited to buildings, walls, trees and paving to be protected. Damaged elements remain the responsibility of the contractor and shall be rectified at no cost to the client or any other party. Existing trees to be retained are to be protected to Council and Project Arborist's requirements. No vehicular traffic, stockpiling or storage of materials within Tree Protection Zones (TPZs).

* No responsibility will be taken by *360 Degrees Landscape Architects Pty Ltd* for any variations in design, construction method, materials specified and general specifications without permission from the Project Landscape Architect.

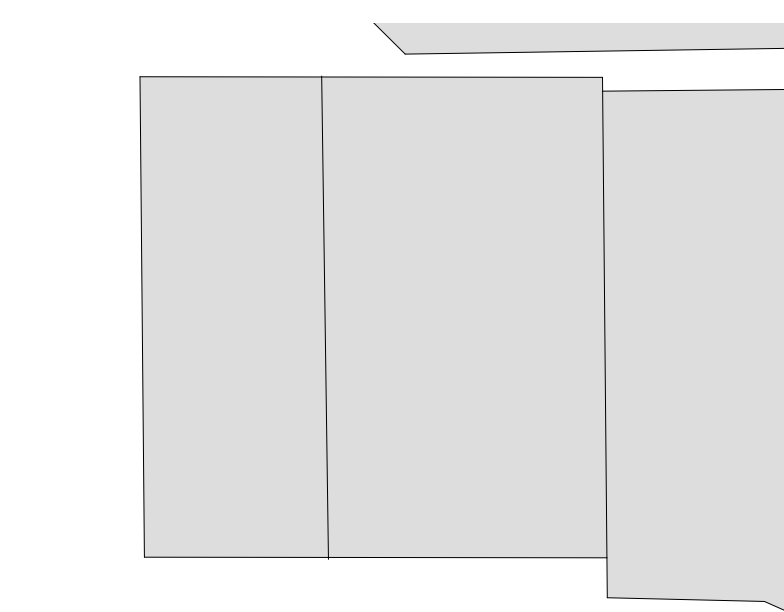
* This Drawing is copyright to *360 Degrees Landscape Architects Pty Ltd*.

LOCATION PLAN



<div>PRELIMINARY NOT FOR CONSTRUCTION</div>	Rev	Amendment	Date	By	<div>IMPORTANT NOTES:</div> <div>Do not scale from drawings.</div> <div>All dimensions to be shown to the attention of the Project Landscape Architect.</div> <div>Larger scale drawings and written dimensions take preference. All dimensions in mm unless otherwise stated.</div> <div>All tree dimensions and RLs in metres.</div> <div>Use figured dimensions only.</div> <div>Do not scale from drawings.</div> <div>All work shall be carried out in accordance with current versions of Australian Standards, BCA and Local Government Regulations.</div> <div>Structural Details shall be subject to Engineer's Specifications.</div> <div>Drainage & Water Feature Details shall be subject to Hydraulic Engineer's Specifications.</div> <div>All work shall be carried out in a professional manner by Qualified Tradesmen according to Landscape Drawings and Engineering Specifications.</div> <div>No responsibility will be taken by 360 Degrees Landscape Architects Pty Ltd for any variations in design, construction method, materials specified, and general specifications without permission from the Project Landscape Architect.</div> <div>This Drawing is copyright to 360 Degrees Landscape Architects Pty Ltd.</div>	CLIENT	Podia	CHECKED	LB	<div>DWG. TITLE</div> <div>Cover Page & Drawing Schedule</div> <div>PROJECT</div> <div>45 McLaren Steet, North Sydney</div>	<div><div>360</div><div>Level 1, 1 Mary's Place Surry Hills, 2010</div><div>P 02 9332 3601 W 360.net.au ABN 90 146 901 322</div></div> <div>L-DA-00</div>
	B	DA Submission	19/05/23	LB		ARCHITECT	Bates Smart	DRAWN	BHC		
	C	DA Submission	29/05/23	LB		SCALE	1:200	SIZE	A1		
	D	DA Submission	02/06/23	LB		STAGE	DA				
	E	Draft Revised DA	16/02/24	JR							
	F	Revised DA	23/02/24	JR							

L-DA-00



Tree Number	Species	Common Name	Retain / Remove
1	<i>Grevilea robusta</i>	Silky Oak	Remove
2	<i>Howea forsteriana</i>	Kentia Palm	Remove
3	<i>Magnolia</i> sp.	Evergreen Magnolia	Remove
4	<i>Strelitzia nicolai</i>	Giant Bird of Paradise	Remove
5	<i>Dracena</i> sp.	Dragon Tree	Remove
6	<i>Persea americana</i>	Avocado	Remove
7	<i>Persea americana</i>	Avocado	Remove
8	<i>Casuarina glauca</i>	Swamp Oak	Remove
9	<i>Persea americana</i>	Avocado	Remove
10	<i>Platanus</i> x <i>hybrida</i>	London Plane	Retain
11	<i>Platanus</i> x <i>hybrida</i>	London Plane	Retain
12	<i>Platanus</i> x <i>hybrida</i>	London Plane	Retain
13	<i>Platanus</i> x <i>hybrida</i>	London Plane	Retain
14	<i>Syzygium australe</i>	Brush Cherry	Remove
15	<i>Jacaranda mimosifolia</i>	Jacaranda	Remove
16	<i>Podocarpus elatus</i>	Plum Pine	Remove
17	<i>Syzygium australe</i>	Brush Cherry	Remove
18	<i>Corymbia citriodora</i>	Lemon-Scented Gum	Remove
19	<i>Casuarina glauca</i>	Swamp Oak	Remove
20	<i>Dracena</i> sp.	Dragon Tree	Remove
21	<i>Camelia sasanqua</i>	Small Leaved Camellia	Remove
22	<i>Strelitzia nicolai</i>	Giant Bird of Paradise	Remove
23	<i>Syzygium australe</i>	Brush Cherry	Remove
24	<i>Corymbia maculata</i>	Spotted Gum	Remove
25	<i>Strelitzia nicolai</i>	Giant Bird of Paradise	Remove
26	<i>Jacaranda mimosifolia</i>	Jacaranda	Remove
27	<i>Syzygium</i> sp.	Lily Pily	Remove
28	<i>Camelia sasanqua</i>	Small Leaved Camellia	Remove
29	<i>Hymenosporum flavum</i>	Native Frangipani	Remove
30	<i>Jacaranda mimosifolia</i>	Jacaranda	Remove
31	<i>Platanus</i> x <i>hybrida</i>	London Plane	Remove
32	<i>Podocarpus elatus</i>	Plum Pine	Remove
33	<i>Melaleuca quinquinervia</i>	Small Leaved Paperbark	Remove
34	<i>Melaleuca quinquinervia</i>	Small Leaved Paperbark	Remove
35	<i>Melaleuca quinquinervia</i>	Small Leaved Paperbark	Remove
36	<i>Melaleuca quinquinervia</i>	Small Leaved Paperbark	Remove
37	<i>Melaleuca quinquinervia</i>	Small Leaved Paperbark	Remove
38	<i>Pittosporum undulatum</i>	Sweet Pittosporum	Remove
39	<i>Melaleuca quinquinervia</i>	Small Leaved Paperbark	Remove
40	<i>Melaleuca quinquinervia</i>	Small Leaved Paperbark	Remove

360^g
Level 1, 1 Mary's Place
Surrey Hills, 2010

P 02 9332 3601
W 360.net.au
ABN 90 146 901 322

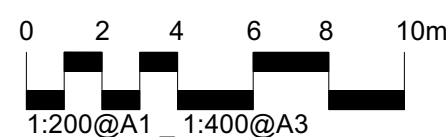


DEEP SOIL ZONE

DEEP SOIL = 78.65 m2
SITE AREA = 1791.87 m2

PERCENTAGE OF DEEP SOIL = 4.39%

Rev	Amendment	Date	By
A	Draft Revised DA	16/02/24	JR
B	Revised DA	23/02/24	JR



IMPORTANT NOTES:

Do not scale from drawings.

All discrepancies to be referred to the attention of the Project Landscape Architect.

Drawings shall conform to the standards of the American Society of Professional Landscapers (ASPLA) and the American Society of Civil Engineers (ASCE).

All dimensions and R/Ls as written.

Drawings shall be used in accordance with the following conditions:

- Verify all dimensions on site before the commencement of any works.
- Contractors shall locate and protect all services prior to construction.
- Contractors shall be aware of and comply with all applicable Government Regulations.
- Structural details shall be subject to Engineer's Specifications.
- Drainage & Water Feature Details shall be subject to Hydraulic/Civil Engineer's Specifications.
- Work shall be carried out in a professional manner by Qualified Tradesmen according to Landscape Drawings and all applicable specifications.

No responsibility will be taken for 3861 Degrees Landscape Architects Pty Ltd for any Engineer or Landscaper, construction or professional negligence or personal disapproval without permission from the Project Engineer or Landscape Architect.

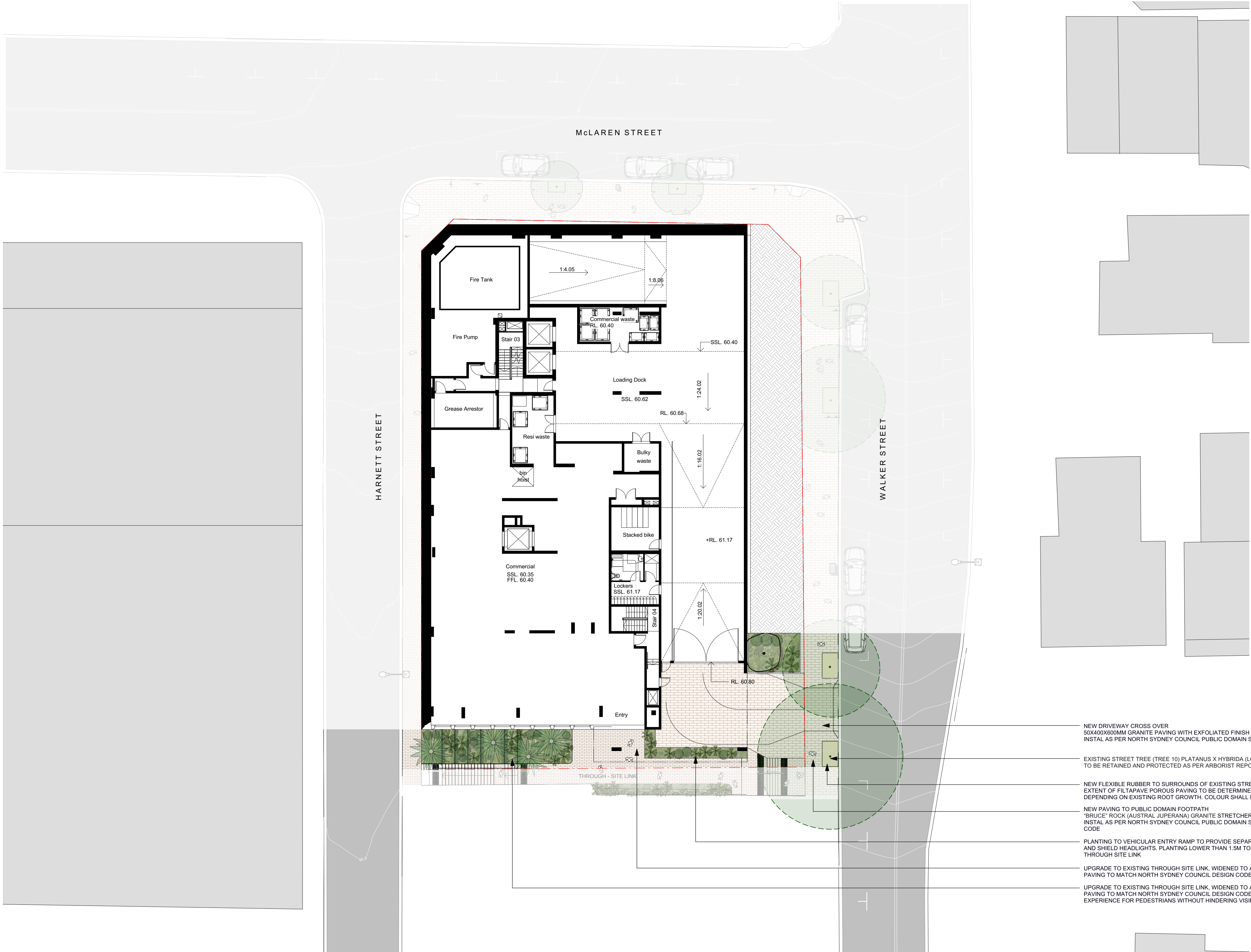
This document is copyright to 3861 Degrees Landscape Architects Pty Ltd.

CLIENT Podia		CHECKED LB
ARCHITECT Bates Smart		DRAWN BHC
SCALE 1:200	SIZE A1	STAGE DA

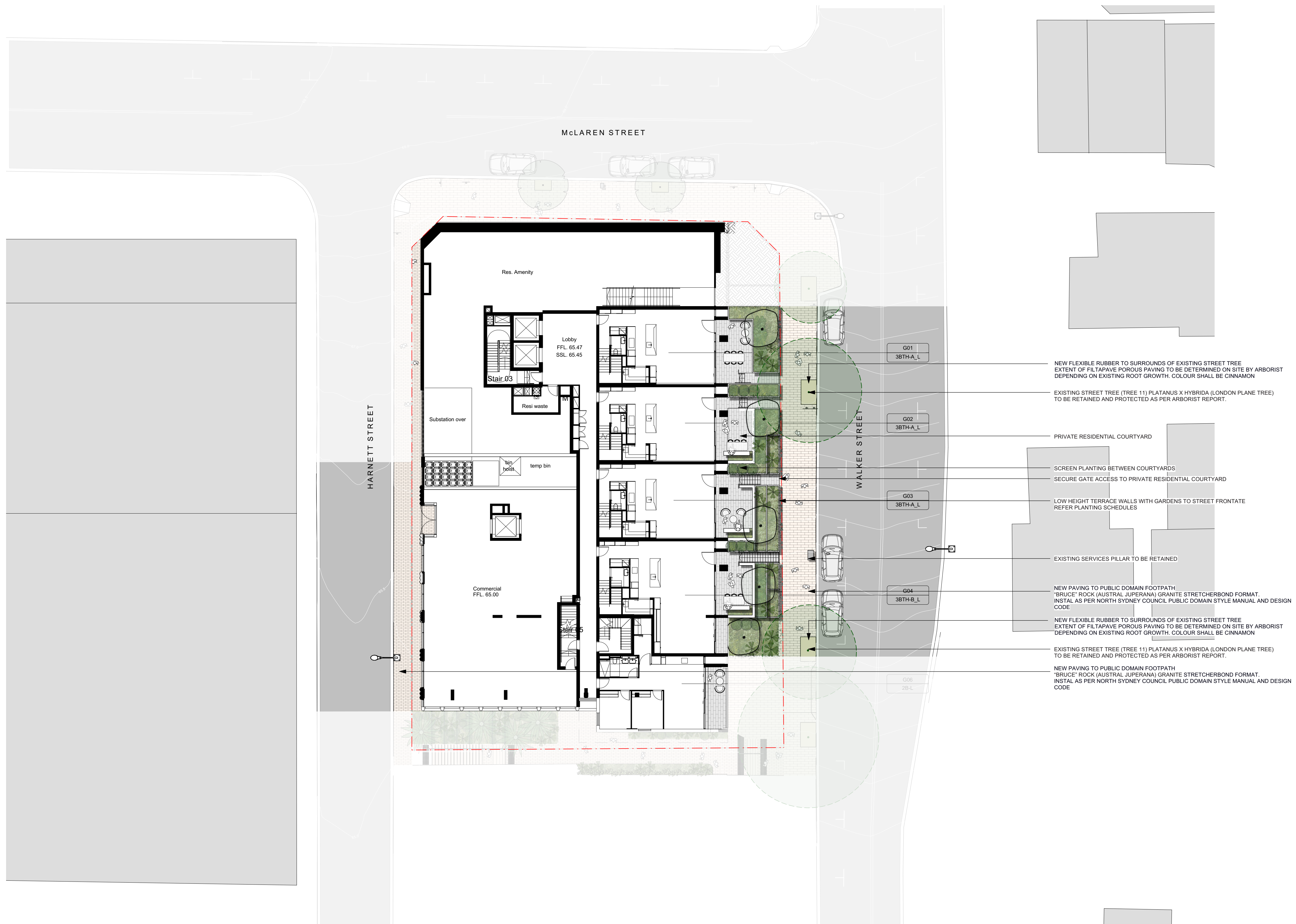
CHECKED	LB
DRAWN	BHC
STAGE	DA

DWG. TITLE
Deep Soil Diagram

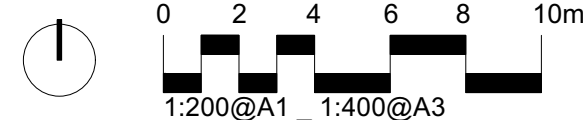
PROJECT
45 McLaren Steet, North Sydney



- NEW DRIVEWAY CROSS OVER
50X400X600MM GRANITE PAVING WITH EXFOLIATED FINISH LAID IN STRETCHER BOND PATTERN
INSTAL AS PER NORTH SYDNEY COUNCIL PUBLIC DOMAIN STYLE MANUAL AND DESIGN CODE
- EXISTING STREET TREE (TREE 10) PLATANUS X HYBRIDA (LONDON PLANE TREE)
TO BE RETAINED AND PROTECTED AS PER ARBORIST REPORT.
- NEW FLEXIBLE RUBBER TO SURROUNDS OF EXISTING STREET TREE
EXTENT OF FILTAPAVE POROUS PAVING TO BE DETERMINED ON SITE BY ARBORIST
DEPENDING ON EXISTING ROOT GROWTH. COLOUR SHALL BE CINNAMON
- NEW PAVING TO PUBLIC DOMAIN FOOTPATH
"BRUCE" ROCK (AUSTRAL JUPERANA) GRANITE STRETCHERBOND FORMAT.
INSTAL AS PER NORTH SYDNEY COUNCIL PUBLIC DOMAIN STYLE MANUAL AND DESIGN CODE
- PLANTING TO VEHICULAR ENTRY RAMP TO PROVIDE SEPARATION FROM THROUGH SITE LINK
AND SHIELD HEADLIGHTS. PLANTING LOWER THAN 1.5M TO ALLOW VISUAL CONNECTION TO
THROUGH SITE LINK
- UPGRADE TO EXISTING THROUGH SITE LINK, WIDENED TO APPROXIMATELY 3m
PAVING TO MATCH NORTH SYDNEY COUNCIL DESIGN CODE
- UPGRADE TO EXISTING THROUGH SITE LINK, WIDENED TO APPROXIMATELY 5.2m
PAVING TO MATCH NORTH SYDNEY COUNCIL DESIGN CODE. PLANTING IMPROVES
EXPERIENCE FOR PEDESTRIANS WITHOUT HINDERING VISIBILITY TO THROUGH SITE LINK



Rev	Amendment	Date	By
B	DA Submission	19/05/23	LB
C	DA Submission	29/05/23	LB
D	DA Submission	02/06/23	LB
E	Draft Revised DA	16/02/24	JR
F	Revised DA	23/02/24	JR



IMPORTANT NOTES:

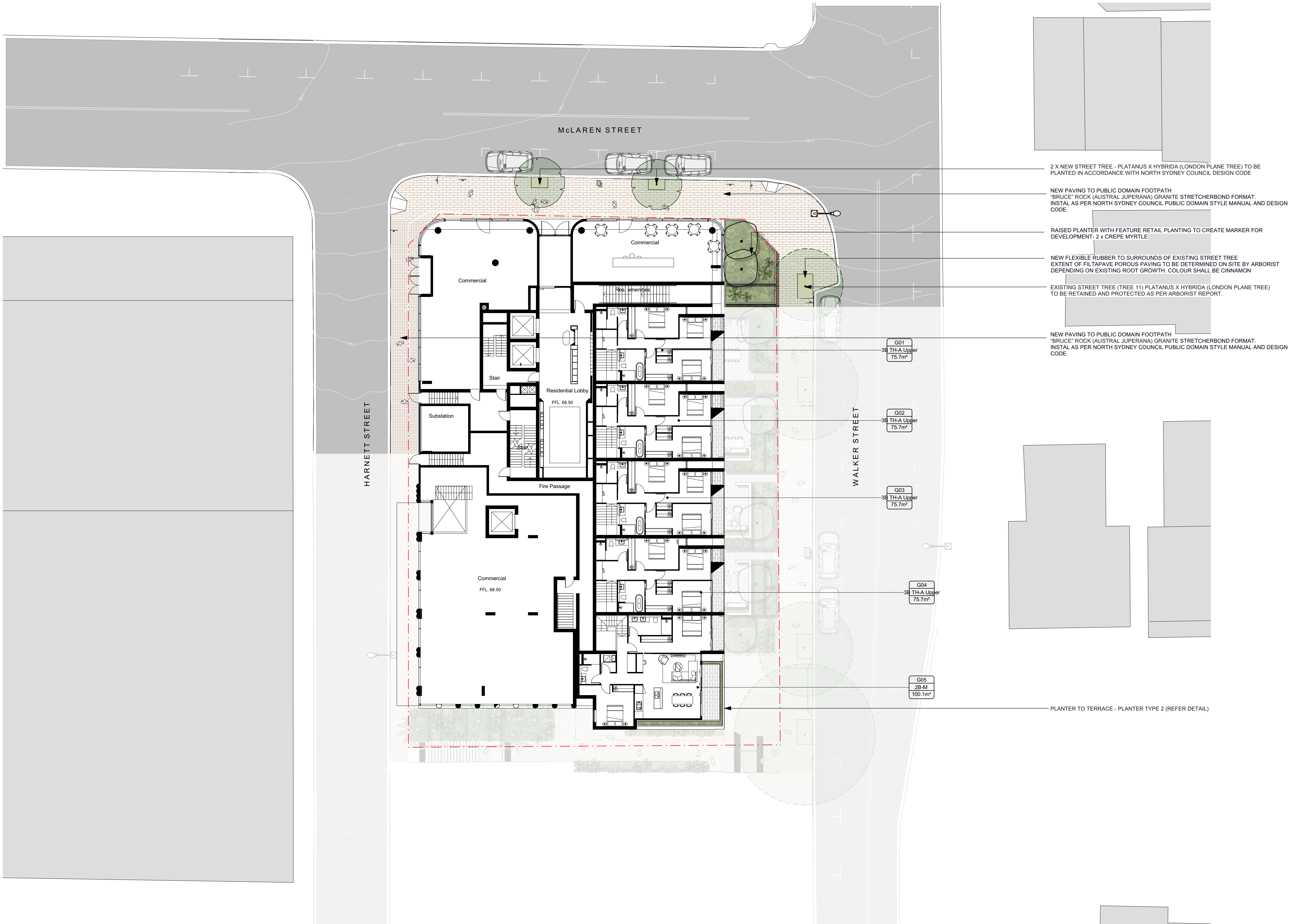
- Do not scale from drawings
- All changes must be brought to the attention of the Project Landscape Architect
- Larger scale drawings and written dimensions take precedence. All dimensions in mm unless otherwise stated.
- Use Imperial dimensions and R/L in metres
- Use Imperial dimensions only
- Verify all dimensions on site before the commencement of any works.
- Contractors shall locate and protect all underground utilities prior to construction.
- All work shall be carried out in accordance with ASA, BCA and Local Government Regulations.
- Structural Details shall be subject to Engineer's Specification.
- Ceiling & Water Feature Details shall be subject to Hydraulic Engineer's Specifications.
- All work shall be carried out in a professional manner by Qualified Tradesperson according to Landscape Drawings and Engineer's Specification.
- No work shall be taken by a 360 Degree Landscape Architecture Pty Ltd for any variations in design, construction method, materials specified, and general specifications without permission from the Project Engineer or Landscape Architect.

This Drawing is Copyright to 360 Degree Landscape Architecture Pty Ltd.

CLIENT Podia		CHECKED LB
ARCHITECT Bates Smart		DRAWN BHC
SCALE 1:200	SIZE A1	STAGE DA

DWG. TITLE
Landscape Plan 2 - Level 00

PROJECT
45 McLaren Steet, North Sydney



2 X NEW STREET TREE - PLATANUS X HYBRIDA (LONDON PLANE TREE) TO BE PLANTED IN ACCORDANCE WITH NORTH SYDNEY COUNCIL DESIGN CODE

NEW PAVING TO PUBLIC DOMAIN FOOTPATH
"BRUCE" ROCK (AUSTRAL JUPERANA) GRANITE STRETCHERBOND FORMAT.
INSTALL AS PER NORTH SYDNEY COUNCIL PUBLIC DOMAIN STYLE MANUAL AND DESIGN CODE

RAISED PLANTER WITH FEATURE RETAIL PLANTING TO CREATE MARKER FOR DEVELOPMENT- 2 x CREPE MYRTLE

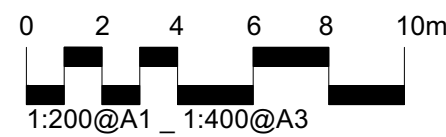
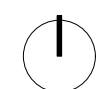
NEW FLEXIBLE RUBBER TO SURROUNDS OF EXISTING STREET TREE
EXTENT OF FILTAPAVE POROUS PAVING TO BE DETERMINED ON SITE BY ARBORIST
DEPENDING ON EXISTING ROOT GROWTH. COLOUR SHALL BE CINNAMON

EXISTING STREET TREE (TREE 11) PLATANUS X HYBRIDA (LONDON PLANE TREE)
TO BE RETAINED AND PROTECTED AS PER ARBORIST REPORT.

NEW PAVING TO PUBLIC DOMAIN FOOTPATH
"BRUCE" ROCK (AUSTRAL JUPERANA) GRANITE STRETCHERBOND FORMAT.
INSTALL AS PER NORTH SYDNEY COUNCIL PUBLIC DOMAIN STYLE MANUAL AND DESIGN CODE

PLANTER TO TERRACE - PLANTER TYPE 2 (REFER DETAIL)

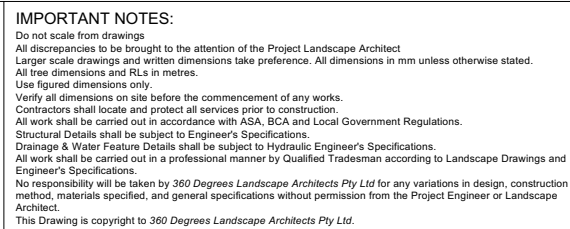
Rev	Amendment	Date	By
B	DA Submission	19/05/23	LB
C	DA Submission	29/05/23	LB
D	DA Submission	02/06/23	LB
E	Draft Revised DA	16/02/24	JR
F	Revised DA	23/02/24	JR



IMPORTANT NOTES:
1. Do not scale from drawings.
All dimensions to be checked to the attention of the Project Landscape Architect.
Large scale drawings and smaller drawings shall conform. All dimensions to be checked to the attention of the Project Landscape Architect.
All dimensions shall be in metres.
Use metric dimensions only.
2. All dimensions shall be in metres.
3. All dimensions shall be in metres.
4. All dimensions shall be in metres.
5. All dimensions shall be in metres.
6. All dimensions shall be in metres.
7. All dimensions shall be in metres.
8. All dimensions shall be in metres.
9. All dimensions shall be in metres.
10. All dimensions shall be in metres.

CLIENT Podia	CHECKED LB
ARCHITECT Bates Smart	DRAWN BHC
SCALE 1:200	SIZE A1
	STAGE DA

DWG. TITLE Landscape Plan 3 - Level 00 Upper
PROJECT 45 McLaren Steet, North Sydney



CHECKED LB
DRAWN BHC
STAGE DA

PROJECT
45 McLaren Steet, North Sydney

Ground Floor Retail and Residential Terraces - Planting



Residential Balconies / Facade Planters - Planting Palette



Communal L08 Roof Terrace - Planting Palette

